

**MAC** TRAILER MANUFACTURING, INC.

**1050-C PNEU MAC TIC DRY BULK**

MIKE JOHNSON  
252Q  
8/12/14 LAST REVISED  
DLR REP.:

2016 Spring Dealer Incentive Program Base Model Trailer

SERIAL NO.  
MODEL NO.  
WEIGHT  
DATE

#VALUE!  
TN1050APB  
9534 lb. +/- 3%  
November 3, 2015

BN-1

192.6712197

**VESSEL**

GVWR	72 GVWR	
MODEL	1050-C	
COMMODITY	DRY POWDER AND GRANULES	
VESSEL CONSTRUCTION	SMOOTH EXTERIOR - INTERNAL RINGS	
LENGTH	42 FT.	
OPERATING TEMP	185 DEG - (MAX)	
OPERATING PRESSURE	14.7 P.S.I. (HYDRO TESTED TO 22.5 P.S.I.)	
VESSEL THICKNESS	.190 ALUMINUM 5454-H32 (STANDARD)	
VESSEL FINISH	MILL FINISH - VESSEL (STANDARD)	
COMPARTMENTS	SINGLE COMPARTMENT (STANDARD)	
LOWER CONES	WELD ON - 45 DEG (STANDARD)	
# OF MANHOLES	3	
MANHOLE LOCATION	OVER EACH HOPPER	
MANHOLE STYLE	BETTS MODEL 8555 20 IN. MANWAY (STANDARD)	

**PIPING / FITTINGS**

UNLOAD TYPE	PRESSURIZED	
-------------	-------------	--

**AIR INLET LINE**

AIR INLET SIZE	3 INCH - INLET, MANIFOLD, VALVE	
CHECK VALVES	2-CHECK VALVES (1 @ AIR INLET)-(1UP STREAM OF FRONT HOPPER DISCHARGE)	
AIR INLET LOCATION	STREET SIDE FRONT	

**AERATION**

AERATORS	3 PER HOPPER (STANDARD)	
AERATION TYPE	B.T.I. SPIN FLOW AERATION KIT @ EACH HOPPER W/ WEAR PLATES	
AERATION LINE LOCATION	STREET SIDE	
AERATION CONTROL	3" BTI MAXXLIFE BUTTERFLY VALVE	
	REGULATES AIR FLOW TO AIR MANIFOLD LINE. 2 INCH - HOSES SUPPLYING AIR TO AERATION SYSTEM.	
SEAT	WHITE RUBBER SEAT	
DISK	STAINLESS STEEL DISC	
HANDLE TYPE	ALUMINUM	
HANDLE POSITION PLATE	MANUAL 10-POSITION	

**PROP / PRES CONTROL VALVE**

HOUSING	3" BTI MAXXLIFE BUTTERFLY VALVE	
SEAT	WHITE RUBBER SEAT	
DISK	STAINLESS STEEL DISC	
HANDLE TYPE	ALUMINUM	
HANDLE POSITION PLATE	MANUAL 10-POSITION	

**BLOW DOWN LINE**

HOUSING	3" BTI MAXXLIFE BUTTERFLY VALVE	
SEAT	WHITE RUBBER SEAT	
DISK	STAINLESS STEEL DISC	
HANDLE TYPE	ALUMINUM	
HANDLE POSITION PLATE	MANUAL 10-POSITION	
RELIEF PRESSURE	15 P.S.I.	
BLOW DOWN LOCATION	STREET SIDE FRONT	

**TOP AIR**

TOP AIR	NONE	PORTS FOR FUTURE TOP AIR INSTALLATION
TOP LINE LOCATION	NONE	

**PRODUCT VALVE**

PRODUCT VALVE SIZE	NONE	INSTALL 5" BUTTERFLY VALVE FLANGES ON BOTTOM OF HOPPER
HOUSING	NONE	
SEAT	NONE	
DISK	NONE	
HANDLE TYPE	NONE	
HANDLE POSITION PLATE	NONE	

**PRODUCT TEE**

PRODUCT TEE TYPE	NONE	
------------------	------	--

**PRODUCT LINE**

LINE	NONE	
CONNECTIONS	NONE	
	NONE	
REAR DISCHARGE	NONE	
DISCHARGE LOCATION	NONE	
GAUGE ENCLOSURE	1	
GAUGES	1 - LINE P.S.I. / 1 - TANK P.S.I. - (INSIDE ILLUMINATED ENCLOSURE)	
GAUGE LOCATION	STREET SIDE - REAR - FORWARD OF TANDEM (STANDARD)	

**MAC** TRAILER MANUFACTURING, INC.

**1050-C PNEU MAC TIC DRY BULK**

MIKE JOHNSON  
252Q  
8/12/14 LAST REVISED  
DLR REP.:

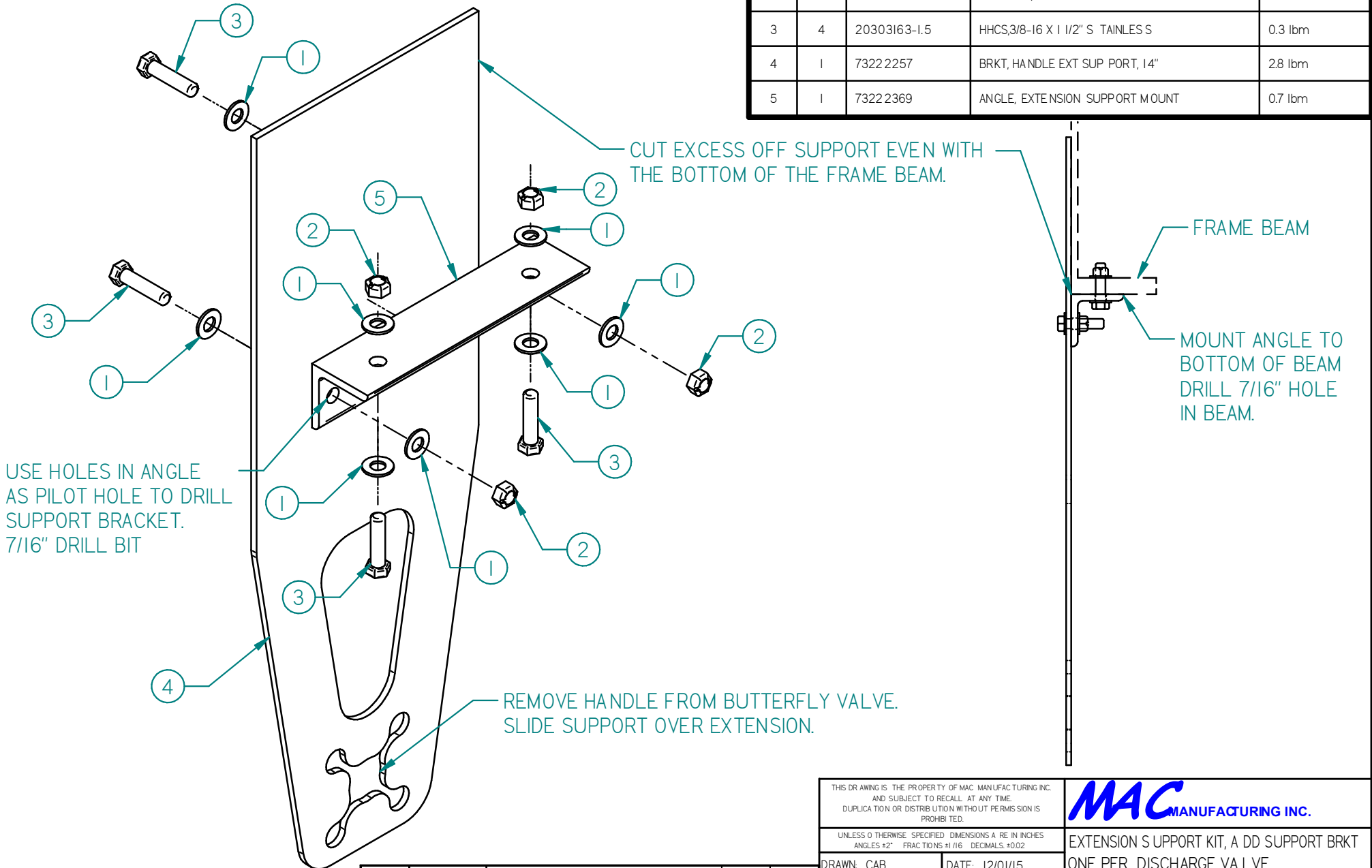
2016 Spring Dealer Incentive Program Base Model Trailer

SERIAL NO.  
MODEL NO.  
WEIGHT  
DATE  
BN-1

#VALUE!
TN1050APB
9534 lb. +/- 3%
November 3, 2015

ACCESSORIES			15
LADDER	LADDER AT REAR - DOUBLE HAND RAIL (STANDARD)		
WALKWAY	ADHESIVE BACKED SKID RESISTANT TAPE BETWEEN TOERAILS (STANDARD)	HOSE HANGER INCLUDED WITH COUPLER	
HAND RAIL	NONE		
TOE RAIL	FULL LENGTH - BOTH SIDES (STANDARD)		
HOSE TUBE	NONE		
HOSE TROUGH	NONE	DOCUMENT HOLDER INCLUDED	
TIRE CARRIER	NONE		
FENDERS	ALUMINUM ROLLED EDGE - SINGLE CONTOUR AT FRONT, DOUBLE CONTOUR AT REAR (STANDARD)		
MUD FLAPS	ANTI-SAIL FLAPS - REAR OF FRONT FENDERS AND REAR OF BACK FENDERS (STANDARD)		
TOW HOOK	NONE		
CHASSIS			34
MODEL TYPE	TANDEM		
5TH WHEEL LOCATION	GALVANIZED, ADJUSTABLE		
5TH WHEEL HEIGHT	48 IN.		
LANDING GEAR	JOST - 5 YEAR NO LUBE - D.S. (STANDARD)		
SUSPENSION	HEND. INTRAAX AAT 230 W/ RAISED AXLE - TP SPINDLE		
AXLES	71.5" AXLES		
WHEEL END PACKAGE	NONE		
SUSPENSION CONTROLS	AUTOMATIC DUMP ON EMERGENCY GLADHAND (STANDARD)		
SCALE SYSTEM	LOAD GAUGE - STREET SIDE REAR (STANDARD)		
HUBS & DRUMS	CENT W/DURALITE HUB. HP OB 10 STUD TP. LS, 7 INCH (STANDARD)		
TIRE & RIM SIZE	22.5 INCH - TIRES & RIMS (STANDARD)		
TIRE TYPE	8 - BF GOODRICH ST230 11R 22.5 16 PLY (STANDARD)		
RIM TYPE	ALCOA HP 22.5X8.25 10 HOLE MILLED		
TIRE INFLATION SYSTEM	NONE		
A.B.S.	(1) 4S2M MERITOR / WABCO (STANDARD)		
BRAKE SHOES	7" XL, W/30-30 CHAMBERS (STANDARD)		
SLACKS	GUNITE (STANDARD)		
HUBODOMETER	NONE		
SYNTHETIC LUBRICATION	NONE		
LIGHTS			0
REAR I.D. LIGHTS	(I.D.) (I.D.) (I.D.)		
"HIGH MOUNT" BRAKE LIGHT	DUAL FUNCTION REAR I.D. LIGHTS BRIGHTEN WHEN BRAKES ARE APPLIED		
REAR LIGHT PANEL	(TURN) (STOP) (STOP) - (STOP) (STOP) (TURN)		
LIGHT TYPE	GROTE LED W/GROMMETS (STANDARD)		
MARKER LIGHTS	2 EACH SIDE - FRONT AND REAR (STANDARD)		
MIDTURNS	2-PAIR COMBO MIDTURNS (STANDARD)		
BACK-UP LIGHTS	NONE		
WORK LIGHTS	NONE		
AUXILARY CABLE (4 OR 7 WAY)	NONE		
PAINT			2
SUSPENSION COATING	GALVANIZED HANGERS WITH HENDRICKSON BLACK SOFT COAT		
PAINT COLOR	MAC BLACK (STANDARD)		

ITEM	QTY.	PART No.	DESCRIPTION	WEIGHT
1	8	20103710	WASHER, 3/8" STAINLES S	0.1 lbm
2	4	20213168	LOCKNUT,3/8-16 G R 8	0.1 lbm
3	4	20303163-1.5	HHCS,3/8-16 X 1 1/2" S TAINLES S	0.3 lbm
4	1	73222257	BRKT, HANDLE EXT SUP PORT, 14"	2.8 lbm
5	1	73222369	ANGLE, EXTENSION SUPPORT MOUNT	0.7 lbm



USE HOLES IN ANGLE AS PILOT HOLE TO DRILL SUPPORT BRACKET. 7/16" DRILL BIT

CUT EXCESS OFF SUPPORT EVEN WITH THE BOTTOM OF THE FRAME BEAM.

FRAME BEAM

MOUNT ANGLE TO BOTTOM OF BEAM DRILL 7/16" HOLE IN BEAM.

REMOVE HANDLE FROM BUTTERFLY VALVE. SLIDE SUPPORT OVER EXTENSION.

THIS DRAWING IS THE PROPERTY OF MAC MANUFACTURING INC. AND SUBJECT TO RECALL AT ANY TIME. DUPLICATION OR DISTRIBUTION WITHOUT PERMISSION IS PROHIBITED.

UNLESS OTHERWISE SPECIFIED DIMENSIONS ARE IN INCHES ANGLES ±2° FRACTIONS ±1/16" DECIMALS ±0.02



EXTENSION SUPPORT KIT, A DD SUPPORT BRKT ONE PER DISCHARGE VALVE

1	12/01/15	RELEASED TO PRODUCTION	N/A	CAB
REV.	DATE	REASON FOR CHANGE	ECN #	BY

DRAWN: CAB	DATE: 12/01/15
WEIGHT: 3.9 lbm	PAGE 1 OF 1

PART # : 73803008